

Real Estate
Projects
Interiors
Architecture
Living

Sept/Oct 2010/ Issue 08

REAL

Middle East Magazine

SEPT/OCT 2010

REAL

DESIGN FOR URBAN LIVING

Spotlight on Construction at
Saudi Build 2010



design for urban living



Alternative Transport
Solutions



Sustainable Building
Makes Business Sense

Colorful Global Culture



FADY ABBOUD:
For the Love of Lebanon



مرفقة بالمسححة العربية
LEBANON: 8,000 L.L.
KSA: 25 SR
UAE: 25 AED
KUWAIT: 2 KD
BAHRAIN: 2.5 BD
QATAR: 25 QR
JORDAN: 5 JD

www.realmiddleeast.com

GLOBAL DESIGN

words MacKenzie Lewis

At one point in the not so distant past, thought-provoking design was considered exclusive to a passionate elite and confined mostly to museums, galleries, and private buildings with eccentric owners. Slowly but surely, it crept beyond walls and boundaries to take over the landscape. International talents are pushing unexpected architectural concepts in big cities and small towns, challenging traditional notions of where we shop, where we play, where we grow up, and where we grow old. No longer a luxury, imaginative design is becoming part of a colorful global culture that everyone can appreciate.

PRAGUE... Křehký Gallery



Prague's new Křehký Gallery offers a fresh take on design, home, and objects through a selection carefully curated by Jana Zielinksi and Jiří Macek. The gallery's collection is made up primarily of limited editions, designer originals, experimental projects, prototypes, and lot-produced objects that impart on the 250 m² space a defining exclusivity. In an unrestricted creative environment, Czech and international designers have the freedom to implement any vision without limits. The collection also proves each object manufacturers' expertise; satisfying demand for superior quality and technology in impressive, unusual pieces requires going beyond standard production practices. From concept to execution to the Křehký Gallery, the entire process is a work of art.



THE SUCCESS OF THE
AWARD-WINNING
2007 KREHKÝ
EXHIBITION PROJECT
RESULTED IN A
PERMANENT GALLERY
IN THE CZECH CAPITAL

BEIRUT... Campus de l'Innovation, de l'Économie et du Sport (USJ-CIES)



AN OPEN SPACE IS CONCEALED WITHIN A MASS BEFORE UNRAVELING TOWARDS THE ROOFTOP, WHERE IT BECOMES EXPOSED WITHIN THE CHAOS OF BEIRUT



If experience is the best teacher, Université Saint-Joseph students are in for quite an education. Beirut-based 109 architects, in collaboration with Youssef Tohmé, designed the new Campus de l'Innovation, de l'Économie et du Sport to encourage visitors to interact with their surroundings. Conceptually a block with sculpting voids, the building's hollow spaces construct various viewpoints across Beirut, visually connecting students to their historical and cultural settings. A massive staircase creates a fluid flow of people from a ground-floor gathering space to the top floor, where landscaped terraces overlook key city landmarks, blurring the lines between the university and its urban environment. Moucharabiyeh-style perforations filter light with a nod to Beirut's past, and a stylized random-opening treatment evokes the disorder and destruction of the Lebanese War. Situated at a vital axis of Beirut's Damascus Road, the campus is sure to become a landmark in its own right.



BERLIN... AST House



The decision to grow old together is a big commitment – especially when it's with your house. That's just what architects Clarke and Kuhn had in mind with their newest residential project on the peninsula Alt-Stralau (AST) in Berlin. Addressing the building owners' concerns that their home would not be suitable for old age, the architects realized a free-standing private house with a separate, self-contained apartment that blends harmoniously with its surroundings. The environmentally-friendly building was made from a combination of recyclable and renewable material, and durable, high-quality material intended to become even more attractive over time. Also dweller-friendly, AST house has flexible elements that adapt to different circumstances, including wide, barrier-free paths for wheelchair users and multiple stories that can be separated into individual units. Details like a Starck-designed bathroom range meet the architects' requirements for wheelchair accessibility and visual impact. Reaching its full potential over time, this is one home that grows old gracefully.



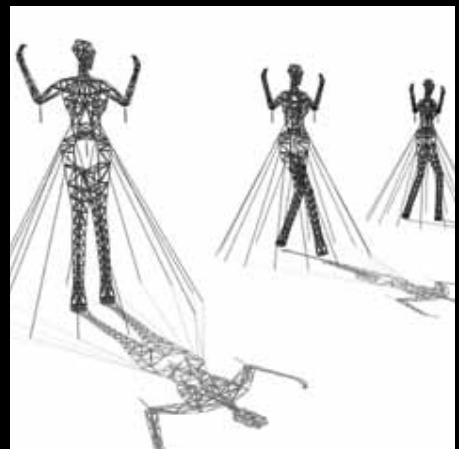
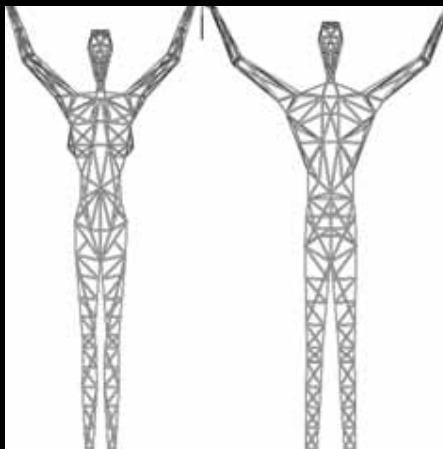
ICELANDIC COUNTRYSIDE... The Land of Giants

Giants will besiege Iceland's countryside, if Choi+Shine Architects have anything to do with it. In reaction to dreary electrical pylons marring the landscape, the architects, based in Boston, transformed existing steel-framed tower designs into colossal human figures. The 150-ft. pylon people elevate a merely functional design, responding to their environment as they crouch, they stretch, they struggle under the weight of the wires. While each figure takes a different pose, all are made from the same parts – torso, upper leg, hand, etc. – that are put together with pre-assembled joints, keeping costs low and construction easy. In June, Choi+Shine Architects took home the 2010 Boston Society of Architects Unbuilt Architecture award, proving even giants can be appreciated for their beauty.

© 2010 Choi+Shine Architects, LLC. All rights reserved



THESE MODERN
CARYATIDS WILL
TAKE ON A QUIET
AUTHORITY,
BELONGING TO
THEIR LANDSCAPE
YET SERVING THE
PEOPLE, SILENTLY
TRANSPORTING
ELECTRICITY ACROSS
ALL TERRAIN, DAY
AND NIGHT, SUNSHINE
OR SNOW
- CHOI+SHINE
ARCHITECTS



SHANGHAI... DuPont Corian Design Studio



Giving a surprisingly sexy edge to solid surface material, renowned British designer Michael Young pushes innovation with the first DuPont Corian Design Studio in Shanghai. In a gallery intended as a platform for designers to exchange ideas, Young shows the versatility of Corian design material by blending ancient Chinese art and modern technology in furniture, wall decoration, and daily household items. The studio is a place of continuous discovery; currently designed with high-speed train interiors and contemporary bathrooms and kitchens, it will constantly evolve over the next six months, making every visit a unique experience.



NEW YORK CITY... Imagination Playground



The newest way to have fun? Use your imagination. Manhattan's South Street Seaport is now home to Imagination Playground, a recreation space designed by architect David Rockwell. Building on the concept of unstructured free play, the public park is an open, flexible environment for children to let loose. A team of trained staff oversees the multi-level space, encouraging kids to interact with the playground's components: sand and water features, ramps, and building blocks designed to spark the imagination. Based on European child development theories that emphasize the importance of fantasy play, Rockwell's design is a departure from traditional US play spaces that focus solely on physical skill. Other US cities are already looking to the playground for inspiration.

AFTER HIGH-PROFILE PROJECTS LIKE THE KODAK THEATRE IN LA, ROCKWELL TARGETS A NEW AUDIENCE: HIS CHILDREN



Credit Frank Oudeman

Credit Blandon Belushin

VENICE... 12th International Architecture Exhibition

2010 Pritzker Architecture Prize Award winner Kazuyo Sejima (who won the award with Ryue Nishizawa) will direct the 12th edition of the Venice Biennale of Architecture through November 21. Proposing People Meet Architecture as the main theme, Sejima invited international architects to reflect on the way architecture defines and manipulates interaction among its users. The 46 participants – including heavy hitters like Rem Koolhaas, Renzo Piano Building Workshop, and Olafur Eliasson – were each given an independent space to demonstrate their understanding of the theme, a response to the interaction between new social and natural environments. Koolhaas also took home this year's Golden Lion for Lifetime Achievement award. Sejima explained, "Rem Koolhaas has expanded the possibilities of architecture; he has focused on the exchanges between people in space. His influence on the world [extends] well beyond architecture."



Olafur Eliasson, *Your split second house*, 2010 © Olafur Eliasson

Renzo Piano Building Workshop, *Zentrum Paul Klee*, 2005, Photo by Michel Denancé

Rem Koolhaas & Reinier De Graaf, *The Image of Europe - Het Beeld Van Europa*, Brussels, Belgium, 2004 © the authors